

SailFast™ Installation

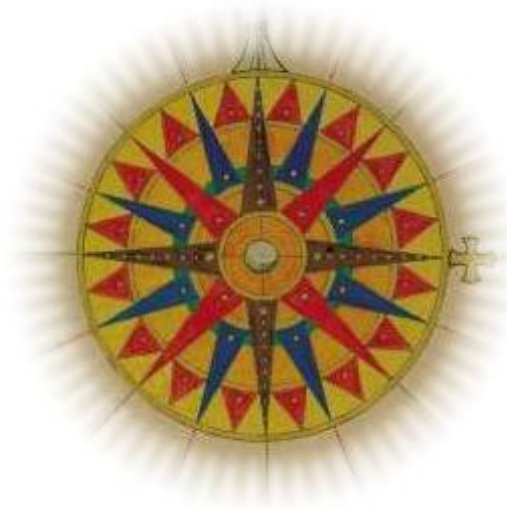
Copyright©2005-2018 SailFast LLC

www.sailfastLLC.com

This document describes program installation and activation for the purchased product and the demo version. Activation for the 2 versions is different, please refer to the appropriate sections of this document.

Contents

System Requirements	2
Installation	3
Program Uninstall	3
First-Time Use – Program Activation	4
Demo Version: First-Time Use – Program Activation	6
Demo Activation	6



System Requirements

SailFast is compatible with Windows 7 and Windows 10. It will probably run on XP but is not recommended. If in doubt try installing and running the free demo version before purchasing.

The minimum recommended hardware requirements are:

1 GHz processor

4 GBytes RAM

200 Mbytes free disk space

USB port or Internet Connection (or other means to install program files)

Any PC that works well with Windows 10 should be ok. The optimum routing process is computationally intensive. A fast processor with extra memory is always desirable.

Installation

IMPORTANT: If you have a previous version of SailFast™ installed on your PC, it may need to be uninstalled before the new version can be installed. Uninstall using Windows Control Panel Add/Remove Programs.

SailFast™ is available as a web site file download. You are licensed to use SailFast™ on only two PCs. This would normally be a home PC and laptop you use on your boat.

The downloaded version is a single “zipped” ≈150 Mbyte file named SailFastVerX.X.X.zip. This file should be saved to the PC you intend to run the program on. Save or copy the file to a folder of your choice. Please note that SailFast is only licensed for use on up to two computers.

Next unzip the file by extracting all zipped files to the same or another folder. The extracted files are:

- SailFastInstaller.msi
- setup.exe.
- readme.txt
- SailFast User Manual ver X.X.X.pdf

The readme.txt file contains basic installation instructions and any last minute changes. The User Manual includes full installation and program activation instructions and is normally preferred.

Note: If WinZip is installed on your computer, double clicking the .zip file should start the unzipping/extracting process or the files may be displayed in Windows Explorer with an "Extract All Files" menu option. If you do not have WinZip, free trial downloads are available at www.winzip.com .

To complete the installation double click and run setup.exe. This will begin a typical Windows program install. Unless you override it during the installation, the application program is installed at C:\ProgramFiles\Sailfast or C:\ProgramFiles(x86)\Sailfast. User folders and files are created at Documents\Sailfast. (or MyDocuments\SailFast with older operating systems).

To start SailFast™ use the shortcut installed on your desktop or access the program from Start\Programs\SailFast menu. The user manual pdf may be accessed in a number of ways:

- Included as one of the zipped install files
- Copy located in C:\ProgramFiles\Sailfast unless you installed the program elsewhere.
- A shortcut to the User Manual is in the Start\Programs\SailFast menu.
- From the Help menu in the SailFast™ program.

Program Uninstall

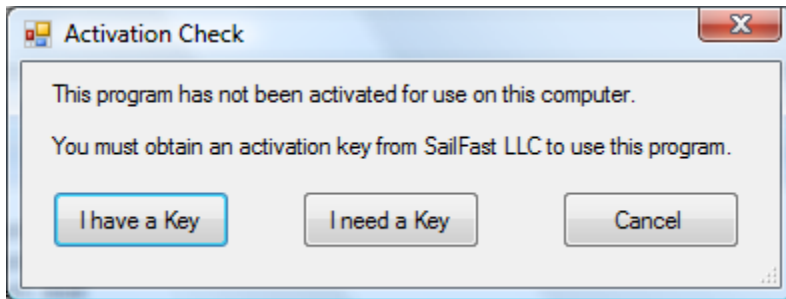
To uninstall SailFast use the Add or Remove Programs in the Windows Control Panel. The Documents\SailFast folder and related files are not affected by uninstall. These folders and files include user entered polars and waypoints which are retained for use when installing upgrades.

First-Time Use – Program Activation

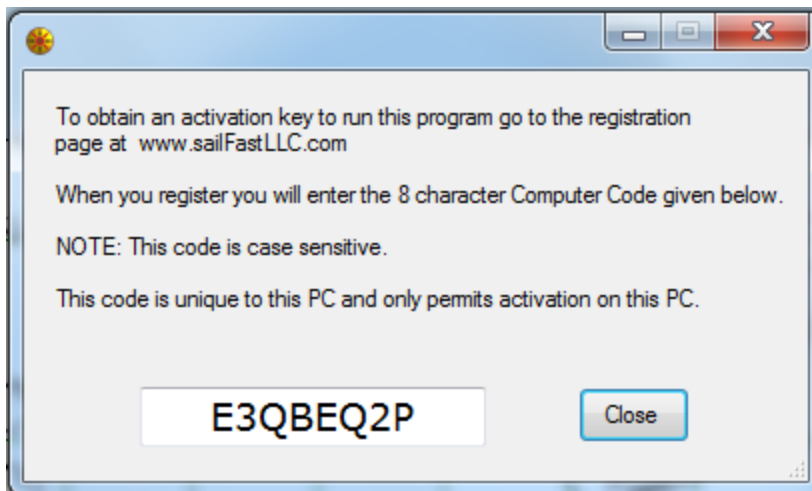
This activation section [DOES NOT APPLY TO THE DEMO VERSION](#). If you have the demo version please skip to the next section.

Your SailFast™ license agreement permits you to install the program on two computers. Typically this might be a land-based PC and a PC on your vessel. To activate the program follow these steps:

1. Install and start SailFast™ on the PC you plan to use.
2. When SailFast™ starts it will detect that the program is not activated on this computer and ask you if you need an activation key, select “I need a Key”

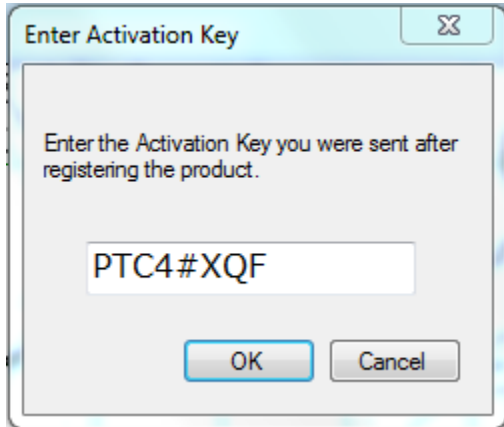


3. The dialog form below will be displayed which will give an 8 digit Computer Code. Write down this code to use when registering the program. Note that this **computer code** is NOT the same as the **activation key**.



4. Go to the Registration page on the www.sailfastLLC.com web site. Follow the directions for registering the product. You will be asked to provide the Computer Code you obtained in step 3.
5. After you register, an 8 digit Activation Key will be emailed to you. The creation of the Activation Key is a manual process and you may not receive an email for up to 12 hours.
6. When you have the Activation Key, restart SailFast™. When you see the dialog of step 2 above, select “I have a Key”

7. Enter the Activation Key with no added spaces. Note that the key is case sensitive and all letters are capitalized.



8. SailFast™ should now be operational on this computer. No further activation or passwords will be required to run the program. However, to install and run SailFast™ on a second computer the complete registration and activation process must be completed again. Note that the Computer Code is unique to each PC.
9. **WRITE DOWN AND SAVE THE ACTIVATION KEY. If you have to re-install Sailfast on the same PC while at sea you will need the key!**

Demo Version: First-Time Use – Program Activation

This section applies to the SailFast Demo version only.

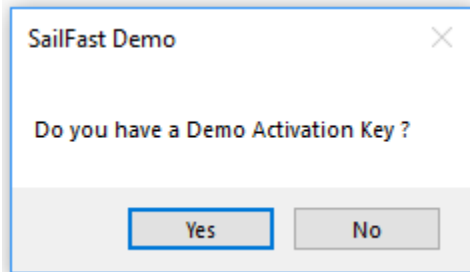
Demo Activation

To activate the demo you will need to obtain an 8 character activation key. To obtain the key email a request to support@sailfastLLC.com and state what race(s) you are preparing for, or what type of cruising.

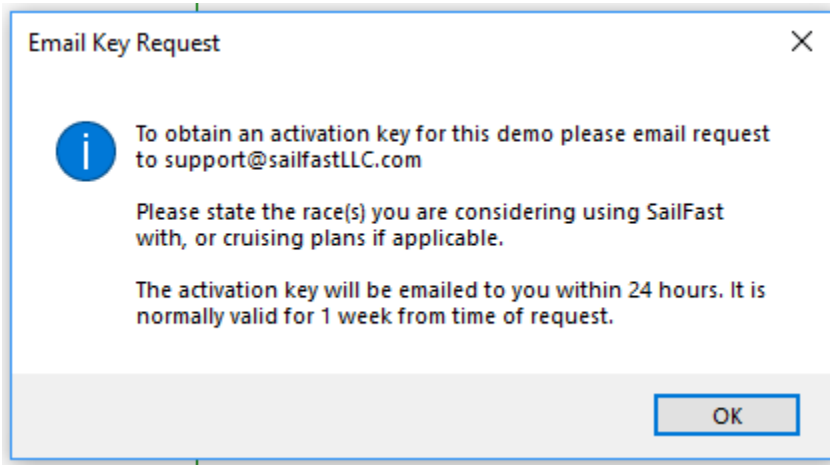
You will be emailed a key within 24 hours. The key will typically let you run the demo for the next week. Keys will not be provided during certain blackout periods corresponding to offshore race events.

The demo will normally be activated for 1 week from the time the activation code is sent to the user. The demo is intended for product evaluation prior to purchase, NOT for race use to avoid making a purchase. Blackout periods corresponding to popular off-shore races may apply.

1. When you first run the demo version you will be asked for an activation key.



2. If you don't have a key you will be given instructions on how to obtain one.



- When you have an activation key, simply enter it. On subsequent running of the program you will be notified as to the expiration date of the demo.

Demo Activation

Enter the Demo Activation Key.

The key is case sensitive. Enter as all caps.

OK Cancel

SailFast™ Revision 2
Program Version 9
25 March 2018